

A Science Centric

Google Custom Search GO

HOME | NEWS | TRAVEL | ART & STYLE | ENTERTAINMENT | COMPENDIUM

Physics | Chemistry | Geology and palaeontology | Biology | Environment | Astronomy | Health | Technology | — In pictures | — InMotion

Today's themes: [cancer](#) · [influenza](#) · [kidney](#) · [transplant](#)

Where am I? > [Home](#) > [New s](#) > [Biology](#)

Tags: [biofilm](#), [cell](#), [electricity](#), [fuel](#), [microbial](#), [strain](#)

Making more efficient fuel cells

Science Centric | 7 September 2009 10:17 GMT

Biological Data Analysis

The Leading Tool for Academic Labs. Download Your Free Trial Today!
www.ingenuity.com

Biology Findings

Human Evolution Journey To Today Premieres 11/3, 11/10, & 11/17, PBS
PBS.org

Honda Power of Dreams

What is the future of mobility? Honda asks today's great thinkers.
www.honda.com

C. elegans Assays

Over 90,000 TaqMan Gene Expression Assays For C. elegans. Order Today!
www.AppliedBiosystems.com

Ads by Google

Bacteria that generate significant amounts of electricity could be used in microbial fuel cells to provide power in remote environments or to convert waste to electricity. Professor Derek Lovley from the University of Massachusetts, USA isolated bacteria with large numbers of tiny projections called pili which were more efficient at transferring electrons to generate power in fuel cells than bacteria with a smooth surface. The team's findings were reported at the Society for General Microbiology's meeting at Heriot-Watt University, Edinburgh, today.

The researchers isolated a strain of *Geobacter sulfurreducens* which they called KN400 that grew prolifically on the graphite anodes of fuel cells. The bacteria formed a thick biofilm on the anode surface, which conducted electricity. The researchers found large quantities of pilin, a protein that makes the tiny fibres that conduct electricity through the sticky biofilm.

'The filaments form microscopic projections called pili that act as microbial nanowires,' said Professor Lovley, 'using this bacterial strain in a fuel cell to generate electricity would greatly increase the cell's power output.'

The pili on the bacteria's surface seemed to be primarily for electrical conduction rather than to help them to attach to the anode; mutant forms without pili were still able to stay attached.

Microbial fuel cells can be used in monitoring devices in environments where it is difficult to replace batteries if they fail but to be successful they need to have an efficient and long-lasting source of power. Professor Lovley described how *G. sulfurreducens* strain KN400 might be used in sensors placed on the ocean floor to monitor migration of turtles.

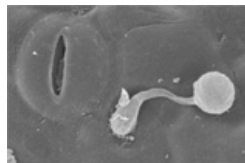
Source: [Society for General Microbiology](#)



DONT MISS —



[Researchers cure colour blindness in squirrel monkeys](#) — [17 Sep 2009] — Researchers used gene therapy to cure two squirrel monkeys of colour blindness - the most common genetic disorder in people...



[Genome of Phytophthora infestans decoded](#) — [9 Sep 2009] — A large international research team has decoded the genome of *Phytophthora infestans*, the notorious organism that triggered...



[Invigorated muscle structure allow s geese to brave the Himalayas](#) — [29 Jul 2009] — A higher density of blood vessels and other unique physiological features in the flight muscles of

AGENCY SCIENCE
Agency Science
Breaking science, health and technology news

AGENCY SCIENCE
Science Shots

— Advertise here

LATEST | MOST E-MAILED | ARCHIVE

Early cooling in cardiac arrest may improve survival

Study finds mixed results comparing two surgical strategies for infant heart defect
Largest gene study of childhood IBD identifies 5 new genes

Elevated biomarkers lead to diminished quality of life in heart attack patients post-discharge

Protein changes in heart strengthen link between Alzheimer's disease and chronic heart failure

NIST demonstrates 'universal' programmable quantum processor

Pilot study relates phthalate exposure to less-masculine play by boys

Warmer means windier on world's biggest lake

Postmortem genetic tests after sudden death may provide less expensive way to